



Personal Blender

Instruction Manual



Item No. 34029 / 34009

IMPORTANT! SAFETY INSTRUCTIONS:



READ THIS MANUAL BEFORE USING THIS APPLIANCE.

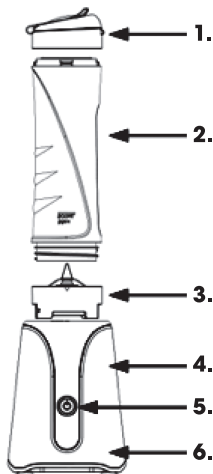


**WARNING! READ ALL SAFETY WARNINGS AND INSTRUCTIONS
FAILURE TO FOLLOW THE WARNINGS AND INSTRUCTIONS LISTED
BELOW MAY RESULT IN ELECTRIC SHOCK, FIRE AND/OR INJURY**

- 1. The intended use of this appliance is explained in this manual. The use of accessories other than those recommended in this manual may present a risk of personal injury.**
- 2. Always check the mains voltage corresponds to the voltage on the rating plate.**
 - Care shall be taken when handling the sharp cutting blades, emptying the bowl and during cleaning.
 - Ensure that the blender is switched off before removing it from the stand.
 - Switch off the appliance and disconnect from supply before changing accessories or approaching parts that move in use.
 - If the supply cord is damaged it must only be repaired or replaced by a suitably qualified person.
 - Do NOT position appliance where it can be reached by children.
 - Extra caution is necessary when used near children or when left unattended
 - The appliance can be used by children aged 8 years and above and persons with reduced physical, sensory or mental capabilities or lack of knowledge and experience if they have been given supervision or instruction concerning the use of the appliance in a safe way and understand the hazards involved.
 - Children must not play with the appliance.
 - Cleaning and user maintenance by children must not be carried out without supervision.
 - Children of less than 3 years should be kept away unless continually supervised
 - Children aged from 3 years and less than 8 years shall only switch the appliance on/off provided it has been installed in its intended normal operational position and they have been given supervision or instruction concerning the use of the appliance in a safe way and understand the hazards involved.
 - Children from 3 years and less than 8 years shall not plug in, regulate or clean the appliance or carry out user maintenance of the appliance.
 - This appliance is for household use only and not commercial or industrial use.
 - Use this appliance only as described in this manual. Any other use is not recommended by the manufacturer and may cause fire, electric shock or injury.

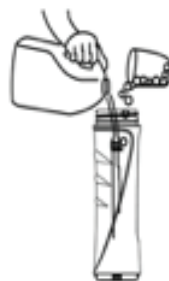
- Never immerse the appliance in water or any other liquid, not rinse it under the tap. Use only a damp cloth to clean the appliance.
- Unplug the appliance immediately after use.
- Keep the appliance out of the reach of children.
- Never let the appliance run unattended.

Components and user instructions (fig.1)



1. Spill-proof drinking lid
2. Sport bottle
3. Blade assembly
4. Blender base
5. Button switch
6. Power cord

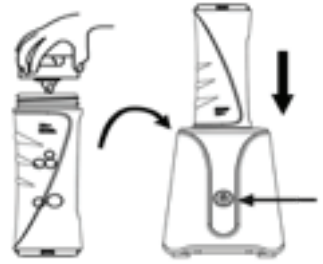
1. Place the sport bottle on a flat surface with the open end facing up. Fill the sport bottle with your favorite ingredients to the 600ml mark.



2. Fasten the blade assembly on the open end of the sport bottle. Turn the sport bottle upside down, line up arrows on the base and place the sport bottle in the base.



3. Turn the sport bottle clockwise on the base to lock it in position. Blending will Start/Stop when you Press/Release the button. Turn the bottle back to the arrow to unlock from the base unit.



4. Once your ingredients are blended turn the sport bottle over and place on a flat surface. Remove the blade assembly with the bottle lid.



The blender is intended for blending fluids, dairy products, sauces, fruit juices, soups, mixing drinks, shakes.


The blending process should be operated at 1-minute intervals. Always leave a 1 minute waiting time period between blends.

Product Cleaning:

Do not use abrasives, scourers, alcohol, etc. to clean the appliance, Never immerse the appliance in water or place it in the dishwasher.

1. Unplug the appliance and remove the detachable parts.
2. Clean the parts in lukewarm water with some washing-up liquid and rinse them under the tap or clean them in the dishwasher.
3. If necessary, remove the rubber sealing ring from the blade units and rinse it with water.
4. Use only a moist cloth to clean the main body of the appliance.

PLUG:

1. This appliance has been fitted with a BS UK compliant plug which should not be replaced or removed.
2. The plug is fitted with a UK compliant fuse link which is suitable for this type of appliance and should only be replaced by a fuse link of the same rating.
3. If access to the fuse link is only possible by removing the plug cover this must only be done by a suitably qualified person.
4. If the plug or the mains cable of this appliance is damaged do not use and dispose of the appliance responsibly.
5. This appliance is a Class 2 appliance protected by double and reinforced insulation and does not require earthing. Class2 appliances are indicated by this  symbol marked on the appliance rating plate.

Technical:

Voltage: 220-240V, 50Hz

Power: 350W

Capacity: 600ml



This symbol indicates that this product should not be treated as normal household waste and it should be recycled. Please take it to your nearest collection facility or for further details contact your local council or visit www.recycle-more.co.uk.

Importer: BML Liverpool L24 9HJ
Made in China.
Model Number: CA-590

